



# GAT MONTHLY MEMBERSHIP PROGRESS REPORT

Results as of: 10/31/2022

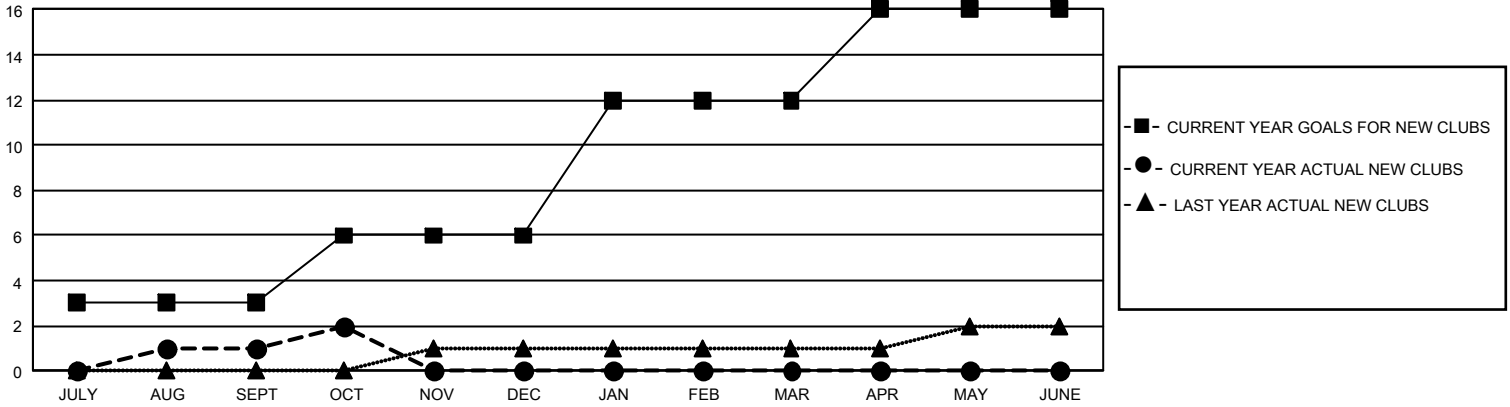
## GMT Constitutional Area 1, Group K

REPORT DOES NOT INCLUDE CLUBS IN UNDISTRICTED AREAS.

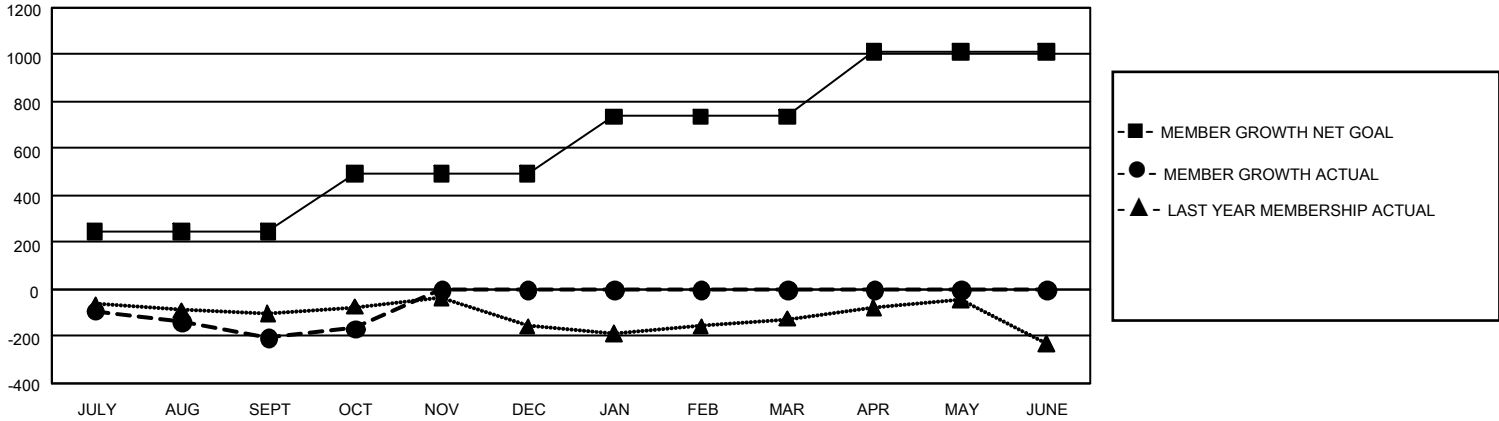
Clubs			
RESULTS FOR 2022-2023			
QUARTER	NEW CLUB GOAL	NEW CLUBS	DROPPED CLUBS
JULY/AUG/SEPT	9	1	0
OCT/NOV/DEC	9	1	1
JAN/FEB/MAR	18	0	0
APR/MAY/JUNE	12	0	0

Members			
RESULTS FOR 2022-2023			
QUARTER	MEMBER GROWTH NET GOAL	MEMBER GROWTH ACTUAL	DROPPED MEMBERS ACTUAL (including transfers)
JULY/AUG/SEPT	247	276	444
OCT/NOV/DEC	244	253	184
JAN/FEB/MAR	245	0	0
APR/MAY/JUNE	277	0	0

GOALS AND ACTUAL NEW CLUBS CUMULATIVE



GOALS AND ACTUAL MEMBERS CUMULATIVE



DROPPED CLUBS: 1	195 CLUBS OF 582 ADDED 1 OR MORE NEW MEMBERS	<b>GENDER DISTRIBUTION</b>
<b>DROPPED MEMBERS</b>	<a href="#">CLICK HERE FOR CUMULATIVE MEMBERSHIP DATA</a>	MALE 10,626 (61.97%)
DECEASED 82		FEMALE 6,516 (38.00%)
CLUB CANCELLED 25		NON BINARY 0 (0.00%)
OTHER 524		PREFER NOT TO ANSWER 4 (0.02%)
<b>TOTAL 631</b>		TOTAL FAMILY UNIT MEMBERS 3,478
		FAMILY MEMBERS PAYING HALF DUES 1,790